

1200 Series Trailer Single Screw Vertical Mixers



Since 1948

Mixing Performance You Can Bank On!

- **Handles a wider variety of ingredients, large round & square bales, wet or dry!**
- **Patent Pending Vortex® Screw mixes quickly without compromising feed quality!**
- **Consistent TMR from start to finish, regardless of batch size – minimizes sorting!**
- **Fast discharge with superior cleanout!**

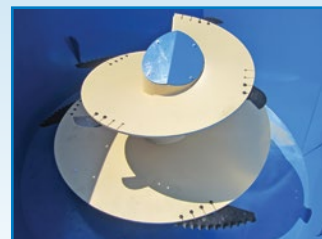
Experience time, labor, fuel, & feed savings!

**Choice of options
to customize
your mixer!**



- **420 – 690 cu. ft. (11.8-19.5 m³) mixing capacities. Low height for easy loading.**
- **Reliable 4-point scale system accurately measures ingredients.**
- **Simple design engineered with few moving parts for long life, low maintenance, and trouble-free operation.**
- **Manufactured by Patz Corporation, a Wisconsin-based, family-owned company.**

Patent Pending Multi-Angle Top Vortex® Screw



Featuring a multi-angle top & cupped flighting, the **Vortex®** Screw mixes quickly without compromising feed quality! (Shown with optional **RAPTOR™** knives. See reverse side for details.)



*Patented

SEEING IS BELIEVING!
Contact your local
Patz Mixer Dealer for details!

FEEDINGSOLUTIONS
www.patzcorp.com

**FLEXIBLE PAYMENT
PLANS AVAILABLE.
ASK FOR DETAILS.**





1200 Series Trailer Single Screw Vertical Mixer Specifications

The name farmers have entrusted for feeding solutions since 1948!

| | U/M | 420 | 500 | 615 |
|---|-----------------------------------|---|-----------------------------------|-----------------------------------|
| CAPACITY | | | | |
| Mixing | ft ³ (m ³) | 420 (11.8) | 500 (14.2) | 615 (17.4) |
| w/extension | ft ³ (m ³) | 490 (13.9) | 575 (16.3) | 690 (19.5) |
| UNIT | | | | |
| Empty Wt. | lb (kg) | 9,500 (4,309) | 9,980 (4,527) | 10,475 (4,751) |
| Max. Load @ 25#/cu.ft. | lb (kg) | 10,500 (4,763) | 12,500 (5,670) | 15,375 (6,974) |
| Max. Gross Wt. | lb (kg) | 20,000 (9,072) | 22,480 (10,197) | 25,850 (11,725) |
| No. of Screws (see options below) | | 1 | 1 | 1 |
| Overall Length | in (m) | 220 (5.6) | 223-3/4 (5.7) | 228 (5.8) |
| Overall Height | in (m) | 97 (2.5) | 106 (2.7) | 119 (3) |
| Overall Width | in (m) | 109 (2.8) | 109 (2.8) | 109 (2.8) |
| Screw Flighting Thickness | in (mm) | 5/8 (16) | 5/8 (16) | 5/8 (16) |
| Floor Thickness | in (mm) | 3/4 (19) | 3/4 (19) | 3/4 (19) |
| Sidewall Thickness | in (mm) | 1/4 (6) | 1/4 (6) | 1/4 (6) |
| Minimum PTO Horsepower* | | 85 | 90 | 110 |
| Viewing Platform | | Access From Right and Left Sides | | |
| Hour Meter | | Std. | Std. | Std. |
| Scale System | | 4-Point | 4-Point | 4-Point |
| No. of Tires | | 4 | 4 | 4 |
| Tire Size | | 245 70R 19.5 Tubeless Truck Tires | | |
| Operating Speed (RPM) | | 540 or 1000 | 1000 | 1000 |
| DOOR OPENINGS | | | | |
| Height | in (mm) | Front/Rear 26 (660) Side 39 (991) | Front/Rear 30 (762) Side 39 (991) | Front/Rear 30 (762) Side 39 (991) |
| Width | in (mm) | 42 (1,067) 34 (864) | 42 (1,067) 34 (864) | 42 (1,067) 34 (864) |
| Discharge | | Various discharge packages available. See Dealer for details. | | |
| Ground Clearance | | Varies with discharge selected. | | |
| OPTIONS | | | | |
| ‡Vortex® Vertical Mixer Screw (not included in basic unit) Single or Dual Kicker | | Choose One Type of Screw for Your Mixing Needs | | |
| Maximum No. of Knives+ | | 7 | 9 | 9 |
| 2-Speed Drive Pkg. | | Opt. | Opt. | Opt. |
| Rubber Side Extensions | | Opt. | Opt. | Opt. |
| Hay Retainer | | Opt. | Opt. | Opt. |
| Discharge Chute w/ or w/out Magnet | | Opt. | Opt. | Opt. |
| Discharge Conveyor(s) | | Various Opt. | | |
| Tub Mounted Magnet‡ | | Opt. | Opt. | Opt. |
| Rear Commodity Door | | Opt. | Opt. | Opt. |
| Indicator Extension Arm | | Opt. | Opt. | Opt. |
| Wide Selection of Indicators | | dinamica generale®, Weigh-Tronix®, & Digi-Star® | | |
| Camera Package | | Opt. | Opt. | Opt. |
| Battery Mount | | Opt. | Opt. | Opt. |
| Ladder | | Opt. | Opt. | Opt. |

Options include:

DIG IN with the RAPTORTM*!



Use with our standard knives to dig in, hook, and cut bales faster and more aggressively!

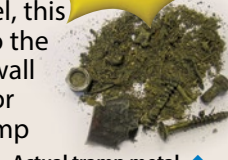
3 Sizes Available!

PROTECT WHAT MATTERS with a Tub Mounted Magnet*!



Exclusive to Patz!

Encased in stainless steel, this magnet is mounted into the Patz Vertical Mixer tub wall on a hinged assembly for effective removal of tramp metal from rations.



Actual tramp metal removed from magnet.

*Patent Pending

Guide Your Hay with Choice of Hay Retainers!

Bolted to the top of the mixer tub, hay retainers help guide dry hay inside the tub during mixing.



Pipe Hay Retainer

Chain Hay Retainer

Proven Performance You Can Count On!

The Patz Vertical Mixer Series includes trailer, stationary, & truck mount units with 140-1,580 cu. ft. (3.9-44.7 m³) mixing capacities!

* Minimum PTO horsepower requirement is for continuous run. Starting the mixer under load will require higher PTO horsepower.

‡ Patent Pending.

+ Quantity varies with material in the ration and processing time.



CAUTION: Never operate Patz equipment without all shields and guards in place. **Safety Is No Accident.** Before operating any piece of equipment, be sure to read and understand the operator's manual. This manual should be kept with the machine at all times. Additionally, make sure all safety shields and devices are functioning properly and are securely in place. Specifications and prices subject to change without notice.

