



Agromatic^{INC}



Stall Mats and Dairy Flooring

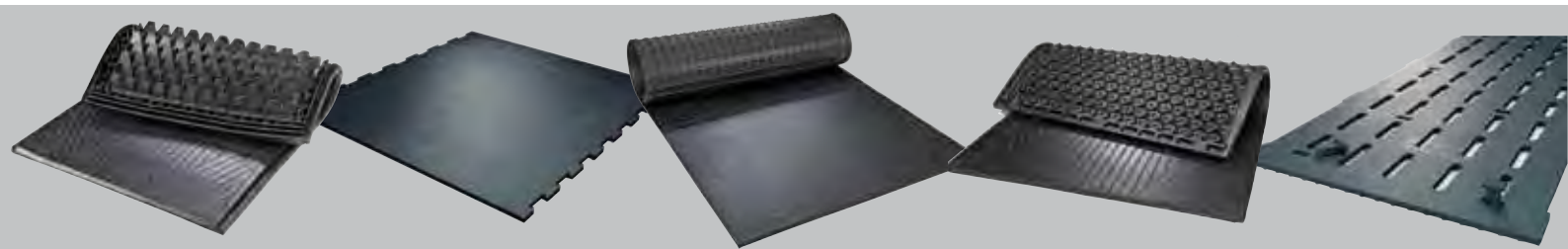


KRAIBURG

► brings the pasture indoors



▶ Cow comfort - soft rubber coverings for lying, walking and standing



- ▶ easy installation
- ▶ long-lasting ideal softness
- ▶ sophisticated design
- ▶ dimensionally stable
- ▶ slip-resistant

If flooring in cattle barns was as soft as in nature, cows would be more comfortable and healthier.

Cows use the floor in the cattle barns for up to 24 hours a day for lying, standing and walking.

The cow needs animal-friendly lying and walking areas:

- ▶ permanently soft
- ▶ hygienic
- ▶ slip-resistant

= pre-requisite for high productivity and longevity

Higher milk yield due to animal-friendly lying and walking areas



Source: Eelkema, W., Heikamp, R., Hopster, H., 2004

Our solution:

Rubber coverings for every application in the barn, especially developed for and optimally adapted to the particular demands.



		page		
Introduction	What products do we produce?	▶ 2		
	Contents & Product Overview	▶ 3		
	About KRAIBURG	▶ 4		
	General product data: warranty, installation, tolerances	▶ 5		
Lying areas	Dairy cow freestall barn			
	Basics	R & D	▶ 6	
	WINGFLEX	★★★★★☆	▶ 8	
	KEW Plus	★★★★★	▶ 9	
	KKM	★★★	▶ 10	
	KKM LongLine	★★★	▶ 11	
	Soft Bed LongLine	★★★	▶ 12	
	ergoBOARD	flexible brisket board	▶ 13	
	Young cattle			
	KIM LongLine	★★★	▶ 14	
	CALMA	★★	▶ 15	
	Deep bedded stalls			
	Basics	deep beds	▶ 16	
	maxiBOX	deep bedded comfort system	▶ 17	
	Pens / special needs areas			
	SIESTA	calving pen / quarantine / ...	▶ 19	
	Walking & milking area	Walking & milking area		
		Basics	R & D	▶ 20
		KURA / Cirrus	for paved/concrete floors	▶ 22
		KURA / Cirrus	for slatted floors and parlors	▶ 23
pediKURA® system pediCirrus system		soft walking area with abrasion zones	▶ 24	
Workplace milking area				
ergoMILK		ergonomic mat for the milking pit	▶ 26	
Installations		Impressions from installations in many countries	▶ 27	

When we offer you several products for the same application, you can see our evaluation on cow comfort with the ★-symbols.

► Our experience is your gain

KRAIBURG group

KRAIBURG has established itself as an expert specializing in the rubber business. The KRAIBURG Holding GmbH & Co. KG has a staff of more than 1,800 employees worldwide, mainly in Germany, Austria and Switzerland. It holds branches in further European countries as well as in Asia and North America.



KRAIBURG housing floor technology

Since 1968 we have been developing and manufacturing rubber stall mats for barns in Germany.

Today about 160 employees exclusively concentrate on these products.



High quality rubber materials

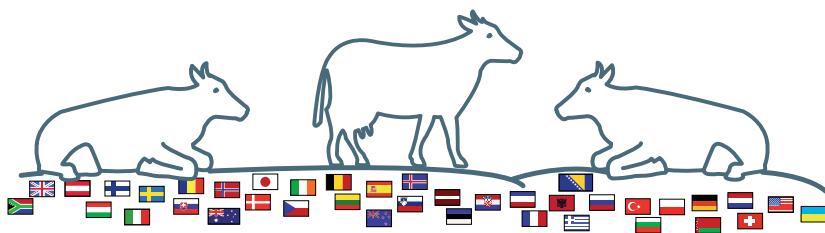
Rubber mats are subject to extremely high stress in agriculture. We have been manufacturing high-quality rubber mixtures with a unique process for over 40 years. Experience will tell you that not all rubber mats are the same.



Tested quality

Our goal is to achieve more than just fulfilling the general legal requirements. We went a step further by additionally being certified with the European-wide ISO 9001 : 2008 standard. So we operate an in-house laboratory and test the properties of our products here – in accordance with DLG testing methods (German Agricultural Society (DLG) – incorporated society).

For independent verification we regularly have our products voluntarily tested by the DLG (results under www.dlg.org).



Have you got any questions?
We look forward to hearing from you!



You can call us at: 800 - 800 - 5824



Agromatic warranty

Our name stands for quality. We guarantee that our products will function reliably for many years.

Stall Mats	Agromatic warranty*	
	Tie Stalls	Free Stalls
WINGFLEX	none	10 years
KEW Plus rubber: foam:	3 years 3 years	10 years 5 years
KKM / KKM Puzzle / KKM LongLine / KIM LongLine	5 years	10 years
Soft Bed LongLine rubber: foam:	none none	10 years 5 years
CALMA (Puzzle)	5 years	10 years
maxiBOX	5 years	10 years
SIESTA	pens: 5 years	

* Stall mat warranties:
10 years = 5 years full, then 5 years prorated
5 years = 3 years full, then 2 years prorated
3 years = 2 years full, then 50% in 3rd year

Flooring	Agromatic warranty*
KURA	5 years
Cirrus	5 years
pediKURA® / pediCirrus	5 years

* Flooring warranties:
5 years full

* More detailed information is available on request.
Please pay attention to the information on the respective product pages.

Installation - easy and fast

The installation of the KRAIBURG mats is easy and fast. Nevertheless, it is important to **pay attention to specific guidelines** as well as to the **correct installation!** The guidelines to correct installation can be found in the installation instructions of the respective products. These are available in many languages. These will be sent with the product, but can also be obtained from your local Agromatic dealer, or by calling 800-800-5824, or going to www.agromatic.net.



Maintenance - minimum working time

Our recommendation: spread a small amount of litter on the lying mats, e.g. soft milled straw or mineral material. (Moisture in the lying area, among other things, plays a major role in the development of skin diseases and infections!)

For cleaning the walking area floorings the combination with scraper manure removal system has already been proven in practice (adapt automatic alley scrapers according to our specifications and check them regularly). We recommend to keep the walking areas as clean and dry as possible. (Important for claw health and slip resistance!)

Our products can be kept clean with a high-pressure cleaner as well as standard cleaning agents.

Tolerances

thickness: +3/-2 mm **length + width:** +/- 1-1/2 % (DIN ISO 3302-1 tolerance class M4)

The tolerances also apply within the mat and when installed.

More technical details on request. The products presented here should only be used for the mentioned applications. Technical specifications are subject to alterations. All sales are subject to our General Terms and Conditions. Legal basis is the German version of the document.

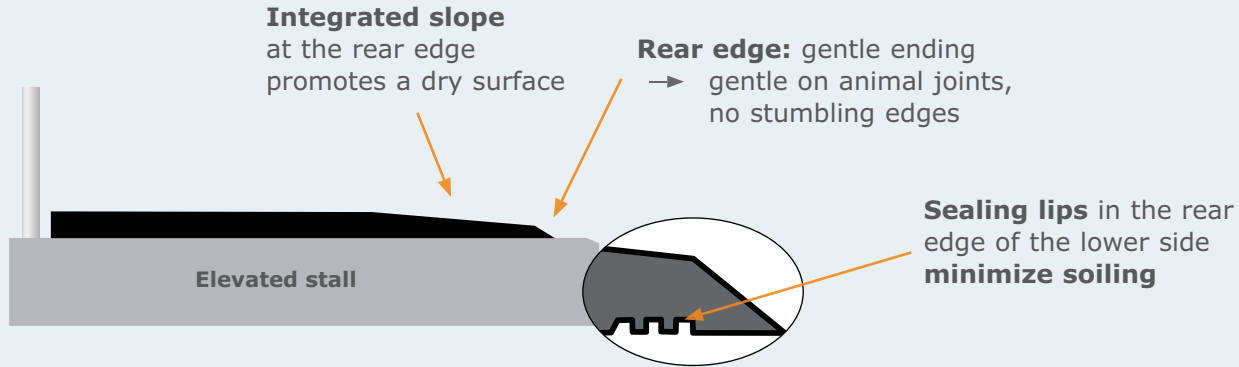
KRAIBURG mats - advantages at a glance

What are the features of KRAIBURG stall mats?

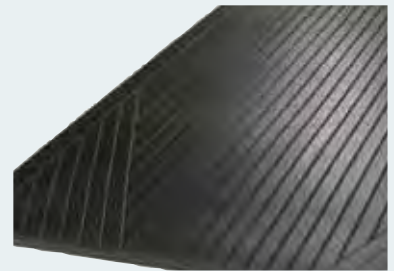
■ Many integrated **additional functions**:



Firm grip standing on the mat



- **Integrated support ribs** promote the correct lying position of the cow and help with standing up
- **Elastic surface:**
 - ▶ Groove profile helps dry the surface
 - ▶ Rear diagonal grooves provide additional support for standing up and lying down
 - ▶ Exceptionally comfortable and skin friendly
- **Excellent footing** → hoof sinks in to **prevent slipping**
- Outstanding rubber mixture → ideal quality - rugged and permanently soft
- **Minimum time and effort for maintenance**

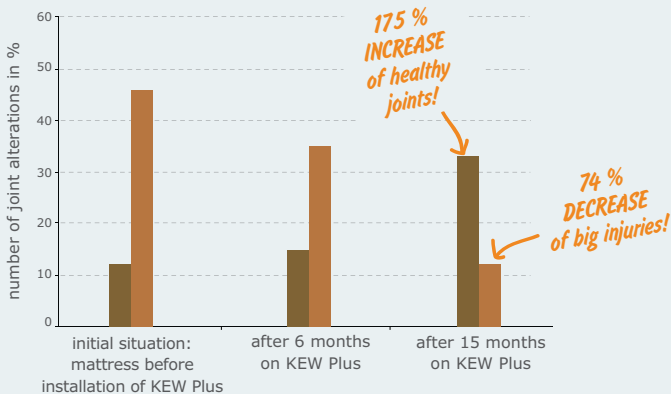


Elastic surface

Caring for joints – well-being

KEW Plus: assessing joint condition

■ healthy joints ■ major injuries
skin abrasions / swelling / impact on joints

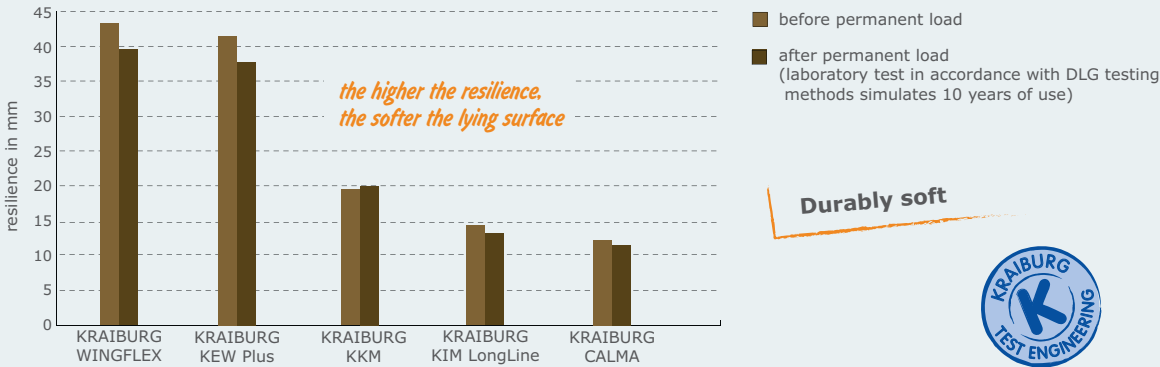


Source: Mathis, A., 2006



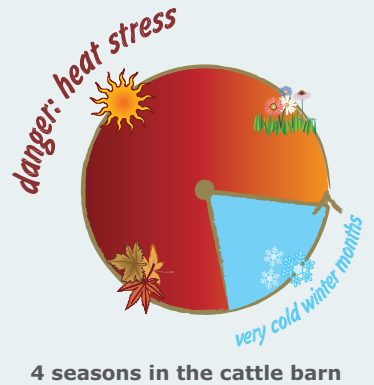
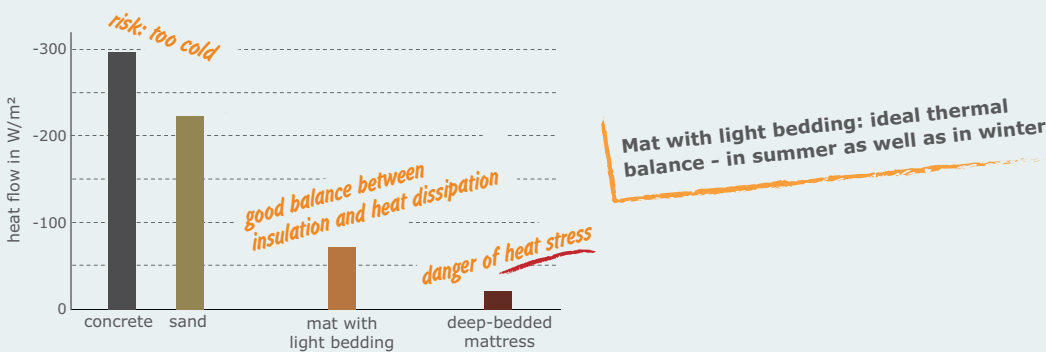
Softness & durability

Softness before and after permanent load



Ideal balance between heat insulation and dissipation

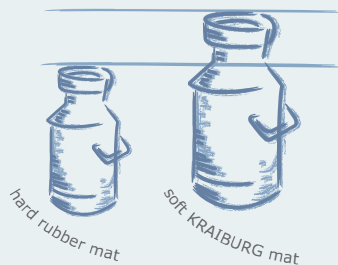
Heat flow of various lying areas Heat dissipation – thermoregulation of the cow



Economic efficiency

Higher milk yield on a soft KRAIBURG mat

Comparing lying areas:



↑
about 3.3 lbs per cow per day
MORE MILK

Source: LfL Saxonia, 1999

Low bedding requirements and minimal labor input for maintenance

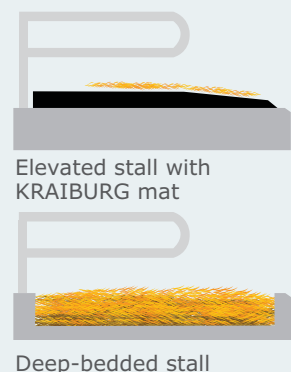
Straw requirements per cow per year

Elevated stall with KRAIBURG mat: 88 lbs
Deep bedded stall with straw: 572 lbs

Labor requirements per cow per year

Elevated stall with KRAIBURG mat: 95 min.
Deep bedded stall with straw: 265 min.

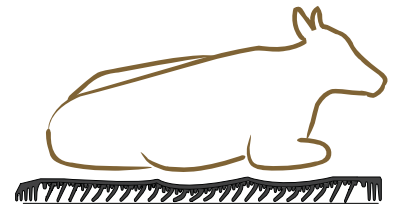
Source: Heidenreich, T., 2007



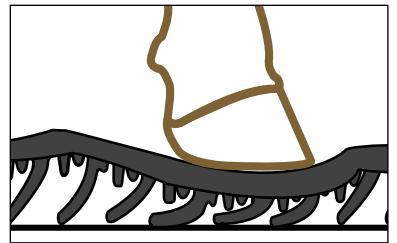
WINGFLEX

Softness: ★★★★★☆

► **high comfort**



2-1/2" thick solid rubber mat with wing profile
 → adapts ideally to the lying cow



→ supporting studs have a cushioning effect at concentrating loads (when the cow gets up or lies down)

- Innovative wing profile creates highest permanent softness
 → adapts easily to body shape
- Comfortable and skin friendly elastic surface
- Integrated soft slope to rear edge promotes a dry surface
- Chamfer at rear edge → gentle on animal joints, no stumbling edge



A profile element (wing and supporting studs):
 extremely stable, wear resistant and flexible



Sealing lips completely surround the mat, prevent dirt and bedding from getting underneath



Connecting bar engages flush with the mat surface and countersinks into the edge → makes professional installation easy

System dimensions:

thickness: approx. 2-1/2"	width: adjustable with connecting bar	mat width:	40"	40"	44"	44"	44"	length: 72"
		connecting bar width:	+ 3-1/2"	+ 5-1/2"	+ 3-1/2"	+ 5-1/2"	+ 7-1/2"	
		stall width:	43-1/2"	45-1/2"	47-1/2"	49-1/2"	51-1/2"	

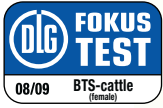
Installation: 2 anchors / mat and 5 anchors / connecting bar*

Accessory: ergoBOARD - the flexible brisket board (see page 13)

* Please take notice of the corresponding installation instructions with useful advice and tips. These will be sent with the product, but can also be obtained from your local Agromatic dealer, or by calling 800-800-5824, or going to www.agromatic.net.

KEW Plus

Softness: ★★★★★



- The three functional layers ensure optimal and permanent softness for every load condition
- The soft lying area within the mat edges supports the correct resting position of the cow and improves slip resistance
- Comfortable and skin friendly elastic surface
- Integrated soft slope to rear edge promotes a dry surface
- Chamfer at rear edge → gentle on animal joints, no stumbling edge



3 functional layers:
2-1/2" of lying comfort



Sealing lips completely surround the foam inlay and the lower mat



Connecting bar engages flush with the surface and makes professional installation easy

Dimensions:

thickness:
approx. 2-1/2"

width:
adjustable with connecting bar

mat width:	42"	44"	44"	44"	44"
connecting bar width:	+ 3-1/2"	+ 3-1/2"	+ 5-1/2"	+ 7-1/2"	+ 9-1/2"
stall width:	45-1/2"	47-1/2"	49-1/2"	51-1/2"	53-1/2"

length:
66-1/2"
72"

Installation: 2 anchors / mat and 5 anchors / connecting bar*

Accessory: ergoBOARD - the flexible brisket board (see page 13)

* Please take notice of the corresponding installation instructions with useful advice and tips. These will be sent with the product, but can also be obtained from your local Agromatic dealer, or by calling 800-800-5824, or going to www.agromatic.net.

KKM / KKM Puzzle

Softness: ★★ ★



- Special honeycomb texture and different softness zones create excellent and permanent lying comfort
- Comfortable and skin friendly elastic surface
- Integrated soft slope to rear edge promotes a dry surface



The **sealing lips** have proven themselves in practice



Minimized soiling underneath the mat due to the **sealing lips** in the rear section

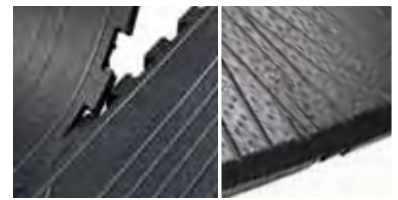
Options:



with straight edges



with Poly-T-Bar
e.g. for stalls with cemented in dividers or especially when using very fine bedding



with puzzle shaped interlocking edges and chamfer on the rear edge

Dimensions:

thickness: 1-1/4"	KKM (straight edges):		KKM Puzzle:	
	width:	length:	width:	length:
	43-1/4/45-1/4/47-1/4/49-1/4/51-1/4"	67/72"	43-1/4/47-3/4/49-1/4"	67/72"

Installation: 3 anchors / mat*

Accessories:

Poly-T-Bar for covering joint widths of 1-1/2 - 3-1/4", **length: 65"**
ergoBOARD - the flexible brisket board (see page 13)

* Please take notice of the corresponding installation instructions with useful advice and tips. These will be sent with the product, but can also be obtained from your local Agromatic dealer, or by calling 800-800-5824, or going to www.agromatic.net.

KKM LongLine

Softness: ★★ ★



- The special honeycomb texture and different softness zones create excellent and permanent lying comfort
- Integrated soft slope to rear edge promotes a dry surface
- Chamfer at rear edge → gentle on animal joints, no stumbling edge

**Installation
independent of
divider arrangement!**



Proven **pebbled surface**

Minimized soiling underneath the mat due to the **sealing lips** in the rear section

Chamfer at rear edge

Dimensions:

thickness: 1-¼"

length:

65-½' roll
(other lengths available as a special order)

width:

67/72"

Installation: only at the front edge / 48 anchors per roll*

Accessories:

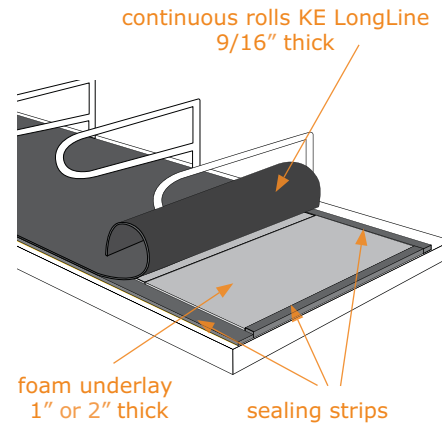
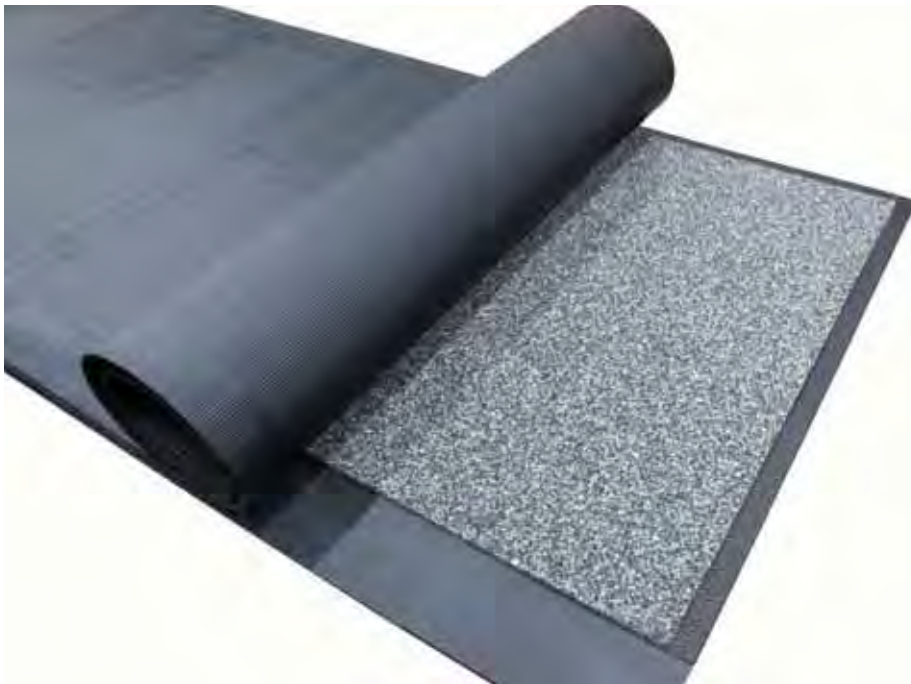
Poly-T-Bar for closure at side edges and joints, **installation:** 5 anchors / Poly-T-Bar*
ergoBOARD - the flexible brisket board (see page 13)

* Please take notice of the corresponding installation instructions with useful advice and tips. These will be sent with the product, but can also be obtained from your local Agromatic dealer, or by calling 800-800-5824, or going to www.agromatic.net.

NEW

Soft Bed LongLine

Softness: ★★ ★



Chamfer at rear edge

- Consists of
 - ▶ KE LongLine
 - ▶ foam underlay
 - ▶ sealing strips
- Chamfer at rear edge → gentle on animal joints, no stumbling edge
- Recommended for suspended dividers only

Dimensions:	thickness:	length:	width:
complete system	1-9/16" or 2-9/16"	86' 1"	71"

Installation: approx. 6 fixings / lying place*

Accessories: ergoBOARD - the flexible brisket board (see page 13)

UniCUP for Soft Bed LongLine

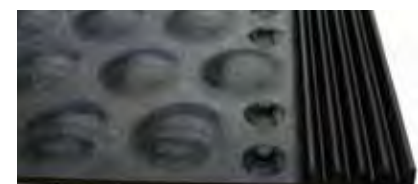
Softness: ★★ ★



- Soft cup-formed underlay for Soft Bed LongLine (as an alternative to foam)
- Integrated slope to rear edge promotes cleanliness
- Robust and easy to clean



Rear with slope and integrated sealing strips



Front with robust integrated sealing strips

Dimensions:	thickness:	width:	length:
UniCUP	1"	47-1/4"	71"

* Please take notice of the corresponding installation instructions with useful advice and tips. These will be sent with the product, but can also be obtained from your local Agromatic dealer, or by calling 800-800-5824, or going to www.agromatic.net.

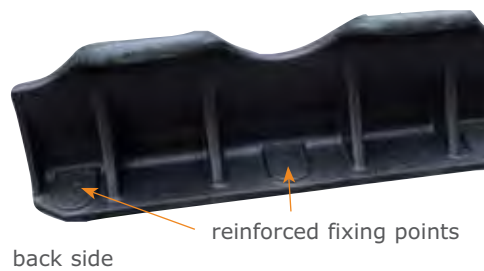
ergoBOARD ▶ The flexible brisket board made of rubber



Research findings:
20% of the animals stretch out their foreleg in the pasture
(Pelzer et al., 2007)

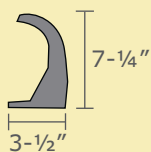
Pleasantly soft contact area allows natural lying positions with foreleg stretched out

- **Complements** ideally the cubicle's control devices
- Flexible, comfortable and dimensionally stable
- Allows relaxed changing of lying positions
- Easy on carpal joints when getting up
- Can be combined with various stall mats
- Easy to retrofit



Dimensions:

length: 47-1/4"



Installation: 5 anchors / piece*

Attention: You need one ergoBOARD per stall, joints within the stall are not advised.

* Please take notice of the corresponding installation instructions with useful advice and tips. These will be sent with the product, but can also be obtained from your local Agromatic dealer, or by calling 800-800-5824, or going to www.agromatic.net.

KIM LongLine

Softness: ★★☆☆



- The soft, highly wear resistant air cushion profile creates pleasant and permanent lying comfort
- Integrated soft slope to rear edge promotes a dry surface
- Chamfer at rear edge → gentle on animal joints, no stumbling edge



Supple air cushion profile



Minimized soiling underneath the mat due to the **sealing lips** in the rear section

Installation independent of divider arrangement!

Dimensions:

thickness:	length:	width:
1-1/16"	86' 1"	63"

Installation: only at the front edge / 65 anchors per roll*

Accessories:

Poly-T-Bar for closure at side edges and joints, **installation:** 5 anchors / Poly-T-Bar*
ergoBOARD - the flexible brisket board (see page 13)

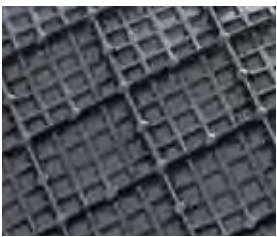
* Please take notice of the corresponding installation instructions with useful advice and tips. These will be sent with the product, but can also be obtained from your local Agromatic dealer, or by calling 800-800-5824, or going to www.agromatic.net.

CALMA

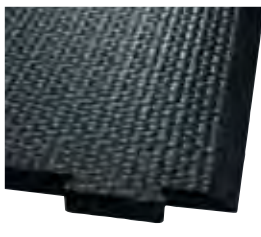
Softness: ★★



- Pleasant and permanent softness through air-cushion-like lower side profile
- Sealing lips reduce soiling underneath the mat
- Chamfer at rear edge → gentle on animal joints, no stumbling edge

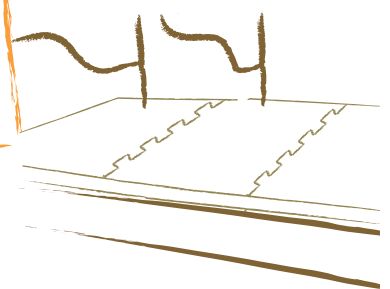


Air-cushion-like lower side profile: soft and sturdy



Chamfer at rear edge

Installation as a continuous system – independent of divider arrangement!



Dimensions:

thickness: 1-1/4" **width:** 45-1/4" **length:** 67" (55/59/71" available as special order)

Installation: 3 anchors / mat*

Accessories:
ergoBOARD - the flexible brisket board (see page 13)

* Please take notice of the corresponding installation instructions with useful advice and tips. These will be sent with the product, but can also be obtained from your local Agromatic dealer, or by calling 800-800-5824, or going to www.agromatic.net.

► **Deep bedded and sand stalls**

Consistently good comfort in deep bedded stalls is not always easy to attain and is especially hard to maintain. The classic deep bedded stall has to contend with several problems which have negative effects on cow comfort. Therefore, we focused our efforts on this subject and have developed a new comfort deep bedded system, "KRAIBURG maxiBOX."

The Typical Problems

Painful contact with the rear curb, when lying down, as well as during lying, caused by insufficient filling level and shape of the rear stall curb



Irritated, swollen & hairless joints due to the hard brisket board and hard/moist bedding

Moist & very dirty stalls

Possible effects:

- lying times reduced by around 5 hours
- hygienic problems (udder health, flies, ...)

Hard lying surface when bedding slides out of place requiring more **frequent refilling**

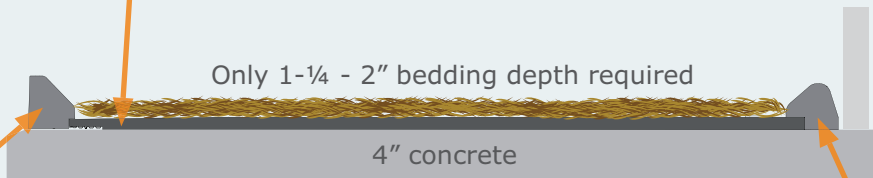


The solution: maxiBOX

NEW

maxiLONGLINE - rubber cover (roll):

- **Safe softness** through a cushioned lower side profile
- Surface profile **extra soft** for excellent comfort
- Integrated slope and drainage openings **improve hygiene**



maxiSTEP -

rubber profile at rear:

- **Comfortable** lying down and lying
- **Integrated drainage**

maxiBOARD -

rubber brisket board:

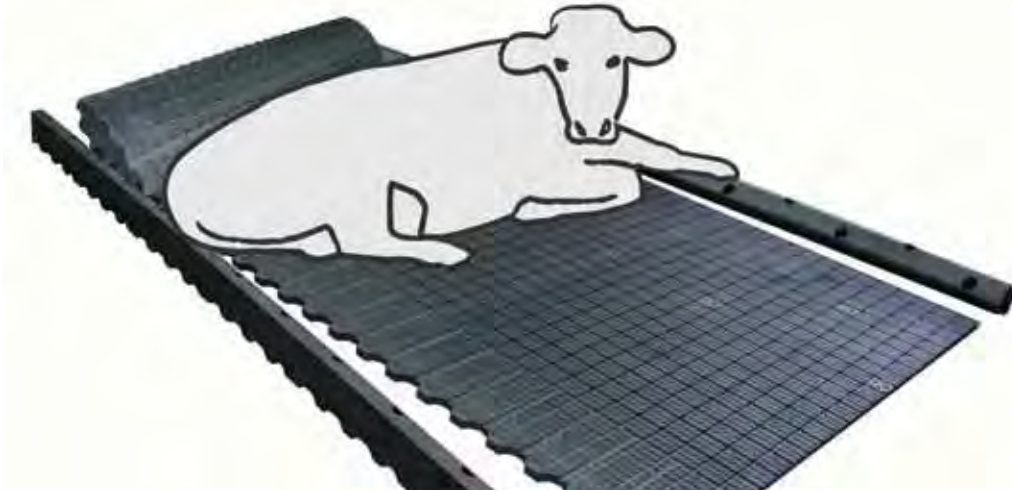
- **Animal-friendly** and elastic
- **Gentle** on joints

The KRAIBURG maxiBOX solves the problems of the classic deep bedded stall and offers **more comfort**:

- Use less bedding (straw, sand, manure solids, etc.)
- Elastic edges in the front and in the back
- Maximum lying comfort
- Year-round functional safety
- Easier stall management possible
- Only 1-1/4 - 2" bedding depth required

maxiBOX ▶ Deep bedded comfort stall

New system



- 3-component system consisting of rubber cover (roll) + rubber brisket board + rubber profile at rear curb

Rubber cover maxiLONGLINE:

- Long-lasting softness through a pliant and wear resistant air cushioned underside profile
- Integrated slope at the rear, as well as drainage grooves and openings, facilitate liquid drainage flow
- Intelligent surface profile retains bedding especially well and is conducive to mat formation

Profile on underside
brings consistent softness



Deep profiled surface
holds bedding in place



Beginning layer formation on mat surface

maxiSTEP - rubber profile at rear curb:

- Elastic and ergonomically chamfered for comfortable lying down and lying
- Bedding losses are minimized
- Integrated drainage for liquids
- Sturdy, dimensionally stable and sure-footed

maxiSTEP
(rear curb)



maxiBOARD - rubber brisket board:

- Animal-friendly and elastic
- Ideally supplements the freestall control rail & devices
- Allows comfortable changing of lying positions
- Easy to put in bedding from the head space

maxiBOARD
(brisket board)



Optional: maxiPROFIL – profile at side:

- Can be installed under stall dividers to help prevent bedding from moving side to side
- Easy installation on the mat
- Used to secure rubber ends and seams

maxiPROFIL
(profile at side)



maxiBOX ▶ Deep bedded comfort stall

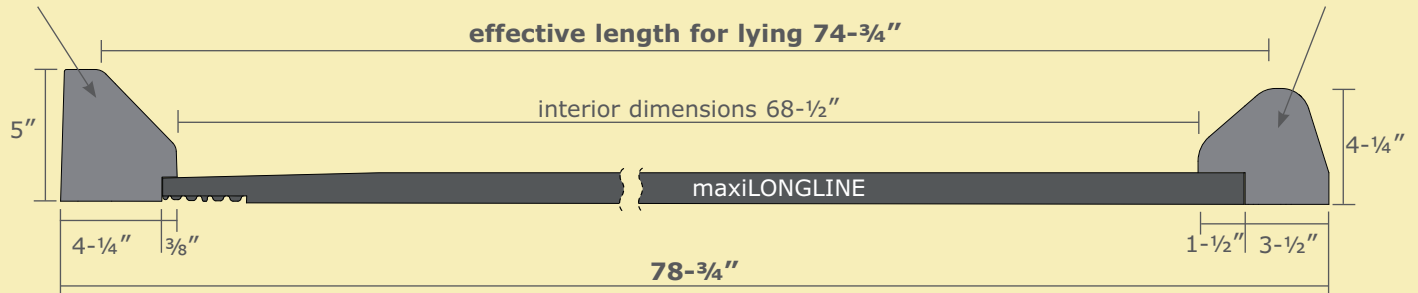
Prerequisites for the concrete surface (lying area):

- 3 % minimum slope
- 4" high concrete stall platform

Dimensions:

maxiSTEP
length: 68-3/4"

maxiBOARD
length: 68-3/4"



maxiLONGLINE:

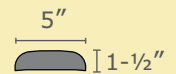
thickness: 1-1/4" **length:** 65-1/2' **width:** 70-3/4"

Kit includes 1 roll of maxiLONGLINE, 12 maxiBOARDS, 12 maxiSTEPS, 168 anchors and washers

Installation: 7 fastenings each for maxiBOARD and maxiSTEP, the maxiLONGLINE is not fastened separately

Accessory:

maxiPROFIL for covering joints, for the side lying area boundary on maxiLONGLINE, for closure at side edges, **length:** 68-1/8", **installation:** 5 anchors / profile



* Please take notice of the corresponding installation instructions with useful advice and tips. These will be sent with the product, but can also be obtained from your local Agromatic dealer, or by calling 800-800-5824, or going to www.agromatic.net.

SIESTA ▶ Calving pen / quarantine / ...

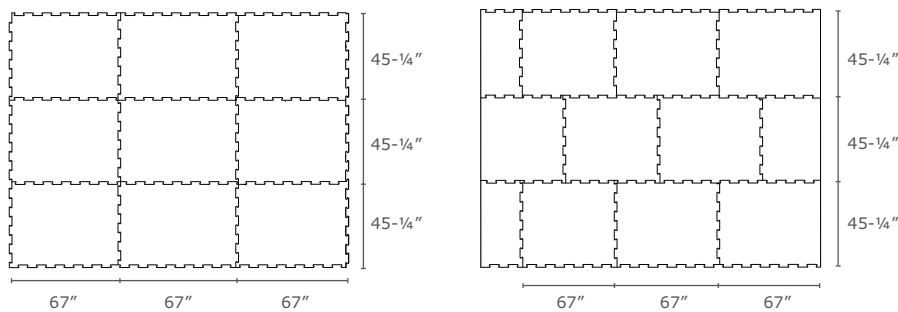


- Comfortable softness through air-cushion-like lower side profile
- Dimensionally stable - durable - good slip resistance
- Easy to clean and disinfect
- 4 sides with puzzle shaped edges → very simple and flexible installation

Dimensions:

4 sides with puzzle shaped edges	thickness: 1-¼"	width: 45-¼"	length: 67"
-------------------------------------	---------------------------	------------------------	-----------------------

Installation examples:



Tip on installation:

In small pens up to approx. 160 ft² SIESTA can be laid out using the floating method (i.e. without fastenings).

* Please take notice of the corresponding specifications. These will be sent with the product, but can also be obtained from your local Agromatic dealer, or by calling 800-800-5824, or going to www.agromatic.net.

The KRAIBURG KURA/Cirrus mats

- Sturdy and thick mats
 - ▶ Permanently stable in position and form (approx. 4 lbs/ft²)
- Appropriate softness for the walking area
- No straining points, ideal load distribution
- Simple and fast installation
 - ▶ Mats are easy to handle
 - ▶ Marked fixing points for easy installation
- **KRAIBURG fastening systems**
 - ▶ Stable and safe, flush with the mat
- **Tailor-made**



Stud profile on lower side



Ultra-grip top surface: supports sure footing



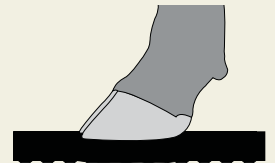
Patented rubber peg



Specially designed: rounded off and flush countersunk

The right softness makes all the difference

Problem: On hard floors hoof damage occurs often. More than 80 % of the time on the outer hoofs of the hind legs.



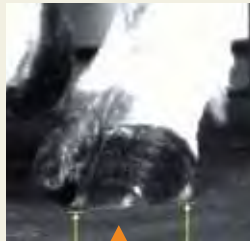
Background:

The outer toe is approx. 3 mm (almost 1/8") longer by nature.

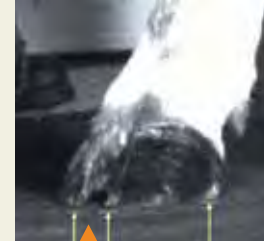


Source: Muggli, E., 2007

Natural ground contact of cattle:



The rear outer claw steps down first and therefore absorbs the peak load.



The inner claw takes the secondary impact – faster on a soft surface than on a hard surface.

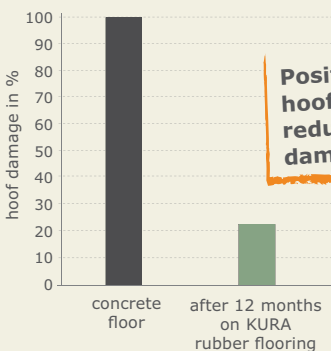
Source: Schmid, T., Weishaupt, M.A., Meyer, S.W., Waldern, N., Peinen, K.V., Nuss, K., 2008
 Figures: Karl Nuss, Zurich

▶ **Floor requirements:** The hoof sinks approx. 3 mm (almost 1/8") into the ground for optimal protection against overload

▶ **The soft KURA/Cirrus-flooring is optimally adapted to the natural demands of the cow!**
 ▶ suitable for new construction, as well as for renovation of slippery or hoof-damaging floors

Hoof health

Hoof health
KURA rubber covering in comparison to concrete slatted floor



Source: Benz, B., 2002



Ideal shape of the hoof wall

Pressure distribution on soft KURA rubber flooring



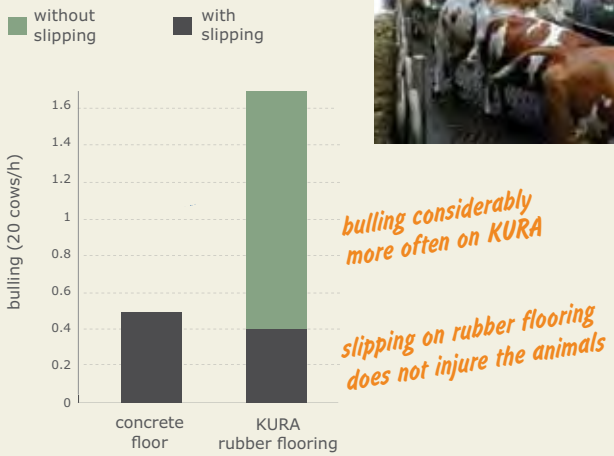
pressure distribution of claws after 6 months exposure to walkways with soft rubber

Correct bearing pressure on the claw wall

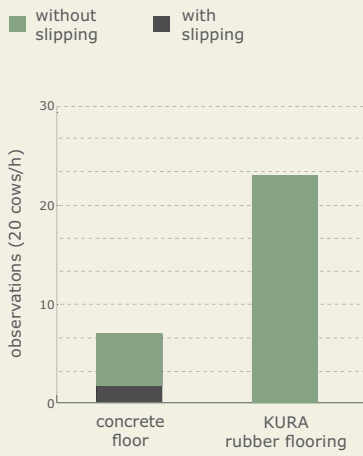
Source: Telezhenko, E., Bergsten, C., Magnusson, M., Ventorp, M., Nilsson, C., 2008

Natural animal behavior – well-being

Bulling



Caudal licking



The cow feels safe and has confidence on the KURA floor

Caudal licking has increased substantially

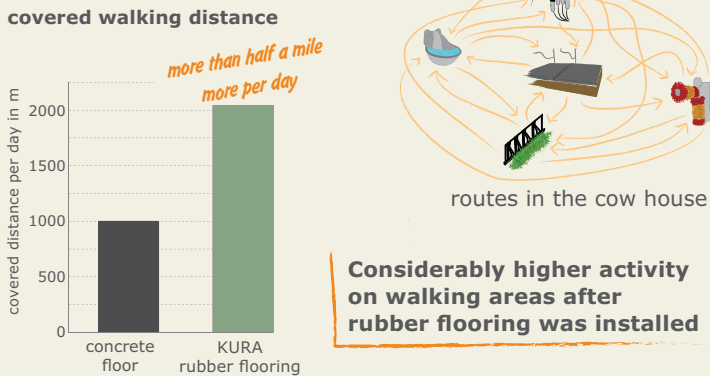
- ▶ Claw sinks in
- ▶ Hollow gives support
- ▶ Cow feels safe

Ultra-grip top surface: supports sure footing

Source: Benz, B., 2002

Better mobility

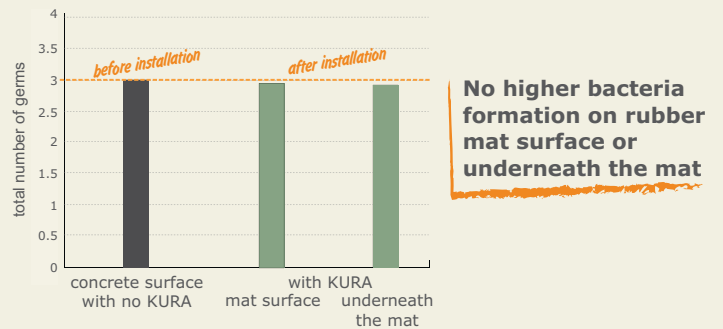
Walking



Source: Benz, B., 2002

Hygiene

Bacteria climate in freestall barns KURA rubber flooring in comparison to concrete slatted floors



Source: Reiter, Partes, Koßmann, 2006

Economic efficiency

Costs for a claw ulcer treatment:

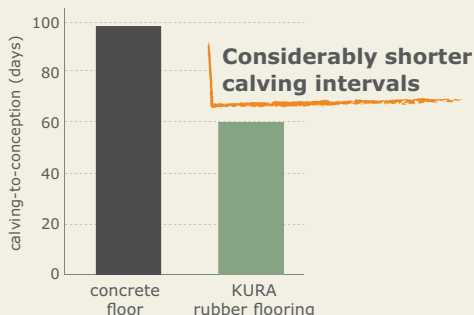
- Costs for treatment
- Less milk

At least \$ 300 for one claw ulcer

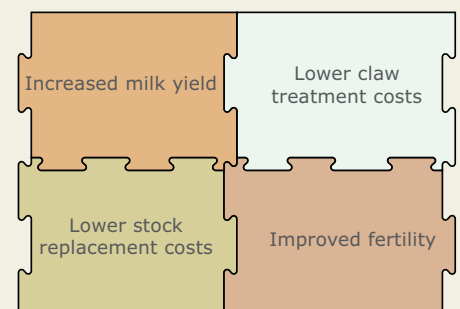
- ▶ Over \$2,000,000,000 lost per year through hoof diseases / 10 - 15 % culling (EU)

Source: Herrmann, 2006

Calving-to-conception intervals



Source: Kremer et al., 2007



Investment in animal-friendly walking areas pays off

KURA / Cirrus ▶ Hoof friendly and slip-resistant rubber flooring for concrete walking areas, parlors and lanes



▶ **Fits very exactly – easy installation!**

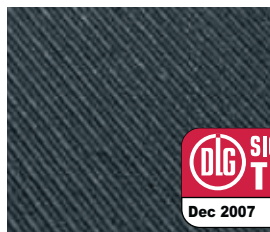
- Improves claw health, productivity and longevity
- Permanently stable in position and form
- Puzzle compensates for natural thermal expansion, practically a seamless floor area
- Manure removal with scraper and driving on mats possible*



Ultra-grip top surface supports sure footing



KURA underside: stud profile for ideal softness



Cirrus underside: stable groove profile for high stress



Special fastening system: extremely sturdy and rounded off

Scraper manure removal:

Alley-scrappers have been successfully used on KURA/Cirrus. Almost every scraper can easily be adjusted to operate according to **KRAIBURG's scraper guidelines**.* However **coordination with the manufacturer** of the scraper is required.


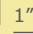

Important: check any adaptations regularly!

Well-known manufacturers of manure removal technology already keep scraper models authorized by us (no modification needed).

Driving over:

Cirrus can be driven over with vehicles whose authorized tires do not exceed the **recommended tire inflation pressure***:

- radial tyre: 56 psi
- diagonal tyre: 42 psi

	range of use:	lower side profile:	thickness:	mat width:	standard lengths:
KURA	walking area in a dairy barn, holding area, parlor, exit lanes, etc.	studs (1/4") 	1" 	49-1/4"	46-1/2/60/67/ 73-1/2/86-1/2"
Cirrus	walking area in a dairy barn with special stress (e.g. areas cleaned with tractor, cast slats, etc.)	grooves 	3/4"		

* Please take notice of the corresponding specifications. These will be sent with the product, but can also be obtained from your local Agromatic dealer, or by calling 800-800-5824, or going to www.agromatic.net.

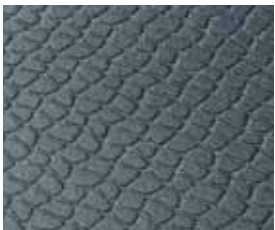
KURA / Cirrus ▶ Hoof friendly and slip-resistant rubber flooring for slatted floors



▶ **Tailor-made for every slatted floor design**

The mats are generally dimensioned according to the guidelines established by our specialists. The slatted floor must be suited for covering with KRAIBURG mats.*

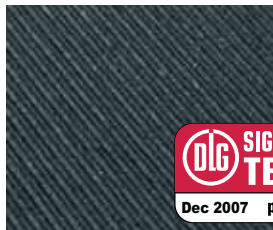
- Improves claw health, productivity and longevity
- Permanently stable in position and form
- Manure removal with scraper and driving on mats possible*



Ultra-grip top surface supports sure footing



KURA underside: stud profile for ideal softness



Cirrus underside: stable groove profile for high stress



Fastening element: patented rubber peg to prevent lateral slipping - flush with the mat

Suited for any type of milking parlor



In a parlor it is also very important for cows to walk and stand on soft floors. The KURA is ideal for these situations. You could also use the Cirrus in parlors.



Example of a custom cut mat for rotary parlor

* Please take notice of the corresponding specifications. These will be sent with the product, but can also be obtained from your local Agromatic dealer, or by calling 800-800-5824, or going to www.agromatic.net.

**pediKURA® system
pediCirrus system**

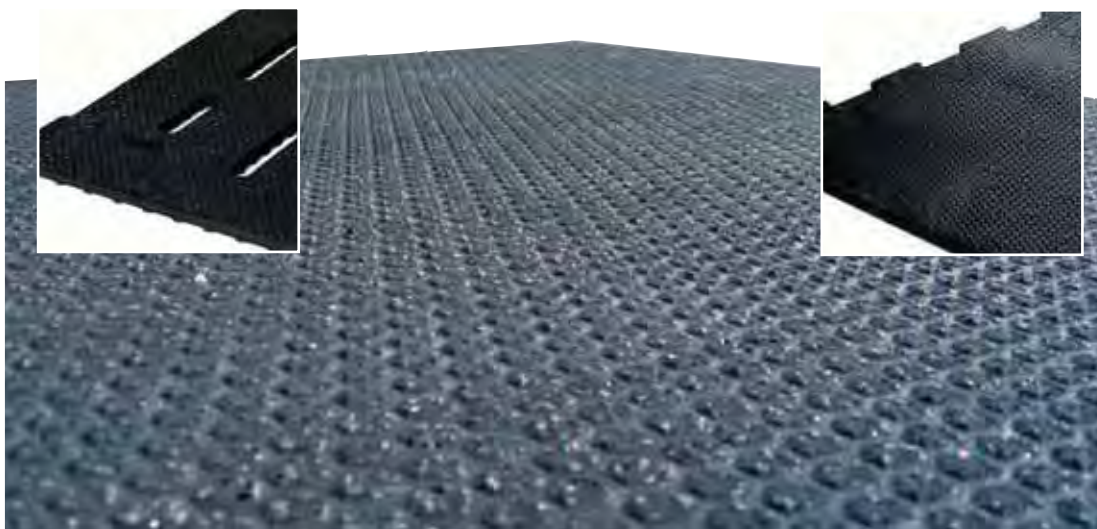
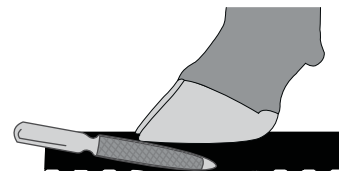
▶ **Claw-friendly and more slip resistant covering with an abrasive surface for walking areas (slatted and paved floors)**

in combination with the well-proven, soft KURA / Cirrus coverings



Natural ground is soft, sufficiently non-slippery and maintains the claws

▶ The pediKURA® / pediCirrus system enhances the soft rubber flooring with selective "abrasion zones", very similar to conditions in nature, where sandy constituents in the soil ensure that horn formation and abrasion are kept balanced.



Coverage of 20 % pediKURA® in the cow barn: last claw trimming 4 months before

- As a modular system can be combined with all **KURA / Cirrus** products
- Selective abrasion zones will be established → abrasion is controllable
- Supports the natural balance between horn formation and abrasion
→ contributes to correct claw form
- **All parts** of the barn can be covered in rubber when pediKURA / pediCirrus is used for ideal softness and slip resistance
- Easy to retrofit
- Manure removal with scraper and driving on mats possible*

About corundum:

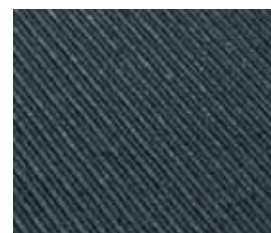
- ▶ Corundum is the **second hardest mineral** after diamonds
- ▶ Corundum does not react with acids and bases: perfect for use in slurry environments
- ▶ Patented technology which has been well-proven in the KRAIBURG-group for many years



Surface with incorporated abrasive corundum and special profiling: supports claw abrasion



pediKURA® underside: stud profile for ideal softness



pediCirrus underside: stable groove profile for high stress

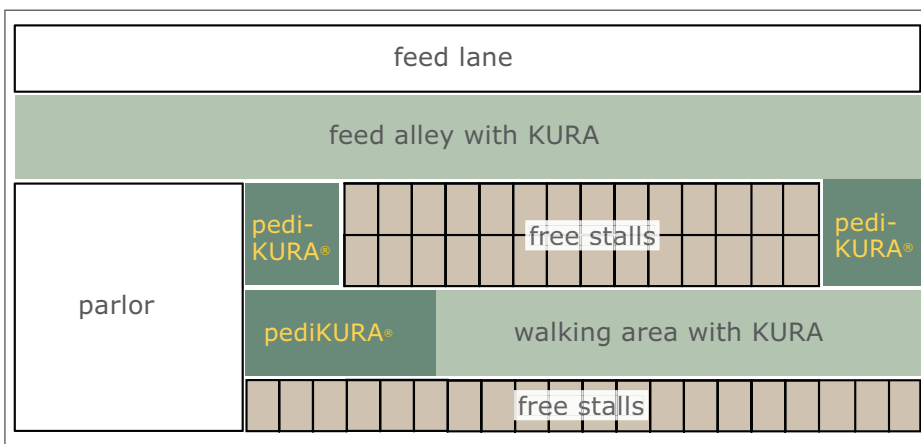
* Please take notice of the corresponding specifications. These will be sent with the product, but can also be obtained from your local Agromatic dealer, or by calling 800-800-5824, or going to www.agromatic.net.

pediKURA® - installation

- When the floor surface is completely covered with the well-proven, soft KRAIBURG KURA or Cirrus mats
- 20 % of this will be covered with pediKURA® or pediCirrus
- install in heavily frequented sections like crossovers, area around drinking bowls and cow brushes, parlor entrance and exit, ...

(The area where the cows stand while feeding on the feed alley should be covered exclusively with KURA or Cirrus.)

Example:



Options and Dimensions:

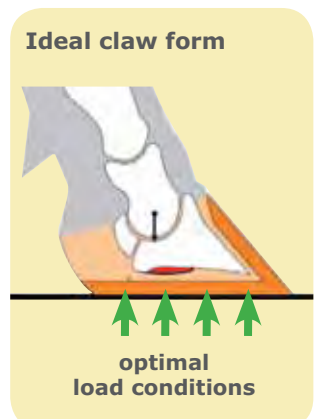
	range of use:	lower side profile:	thickness:	width:	length:
pediKURA®	concrete floor	studs (1/4")	1"	49-1/4"	60/67/73"
pediCirrus	slatted floor, for special stress	grooves	3/4"		

**To take full advantage of our product, please be aware of the following:
pediKURA® maintains the claw form, but claw trimming is still necessary!**

- ▶ Claws must still be trimmed regularly, but only for the purpose of claw care and less for position correction or complex treatment.

We recommend functional claw trimming **4 to 6 weeks before pediKURA® is installed.**

Important: do not install pediKURA® at the same time you trim claws, because the claw has to become accustomed to the abrasion.



ergoMILK ▶ The ergonomic mat for the milking pit



People comfort:
ergoMILK
for sure footing
and comfort during
milking



- Feels pleasantly soft underfoot
- Pliable non-slip diamond surface → comfortable and sure footing
- Heat insulating
- Easy to clean and disinfect



Underside profile:
¼" high, pliable
studs

Walking surface:
Pliable non-slip
diamond profile



Puzzle:
The clean seam

Dimensions:

lower side profile: studs (¼") **thickness:** 11/16"

7/16" 11/16"

puzzle shaped edges on 3 sides:	width: 38"	length: 67"
puzzle shaped edges on 4 sides:	17-3/8"	67"

▶ Prerequisites / tips on installation:

- Subsurface must be even and clean
- Lay out using floating method (no plugging and further fastening)
- Lay out mats, do not press them together (join loosely)
- Lay out completely to avoid stumbling edges!
- Maintain a 1 - 5" distance to the edge (side wall) → cleaning gutter
- For adjustments at site, the mats can easily be cut with a sharp knife
Tip: moisten the knife and cut along a guide laid against the mat

KURA in the milking parlor



Shamrock Dairy, Phoenix, Az., USA
Shamrock milks 10,000 cows ->
after 4 years the mats show no signs of
use - that means more than 6 million
cows have walked over the mats!

KKM and WINGFLEX stall mats,
KURA rubber for the walking area and milking parlor



Bernatoniai Farm, Kauno r., Lithuania
250 KKM mats, 50 WINGFLEX mats
10,800 ft² KURA rubber



KEW Plus stall mats and
KURA rubber for the walking area



Plamen Penshev, Elchovo, Bulgaria
720 KEW Plus mats
34,000 ft² KURA

KURA in the milking parlor



Farm Detskoselskoe, Pushkin, Russia
750 ft² KURA

KURA rubber for the walking area
with pediKURA® system,
KEW Plus, KKM and WINGFLEX stall
mats



Farm Asen, Ach, Austria
3,200 ft² KURA and pediKURA®,
44 KEW Plus, 9 KKM and
5 WINGFLEX mats

KURA in the milking parlor



Josef Häuslschmid, Gramsham,
Germany
500 ft² KURA

Cirrus rubber for the walking area



Ms v.d. Sijpe, Bant, Netherlands
approx. 8,600 ft² Cirrus slatted

KEW Plus stall mats,
Cirrus rubber for the walking area



GAEC COUVET, Tournans, France
6,500 ft² Cirrus
151 KEW Plus mats



KURA rubber for the walking area



Brembridge Farm, Devon, Great Britain
19,300 ft² KURA

KURA rubber for the walking area with
pediKURA® system,
KEW Plus stall mats & SIESTA in the
calving pen



Kartop, Skara, Sweden
approx. 29,000 ft² KURA with pedi-
KURA® system, 308 KEW Plus mats,
SIESTA in pens

WINGFLEX stall mats and ergoBOARD
flexible brisket board



Murdock Farm, South Island, New Zealand
494 WINGFLEX mats with ergoBOARDS



Your Agromatic / KRAIBURG dealer:



P.O. Box 29
N6989 Rolling Meadows Drive
Fond du Lac, WI 54936

Toll free: 800 - 800 - 5824
Phone: 920 - 922 - 1970
Fax: 920 - 922 - 1750
www.agromatic.net
info@agromatic.net



KRAIBURG Elastik GmbH

Göllstraße 8
84529 Tittmoning
GERMANY
Tel: +49/86 83/701- 303
Fax: +49/86 83/701- 190
e-mail: info@kraiburg-elastik.de
www.kraiburg-agri.com

02/2012



► brings the pasture indoors

www.kraiburg-agri.com
www.agromatic.net

