



BAUER

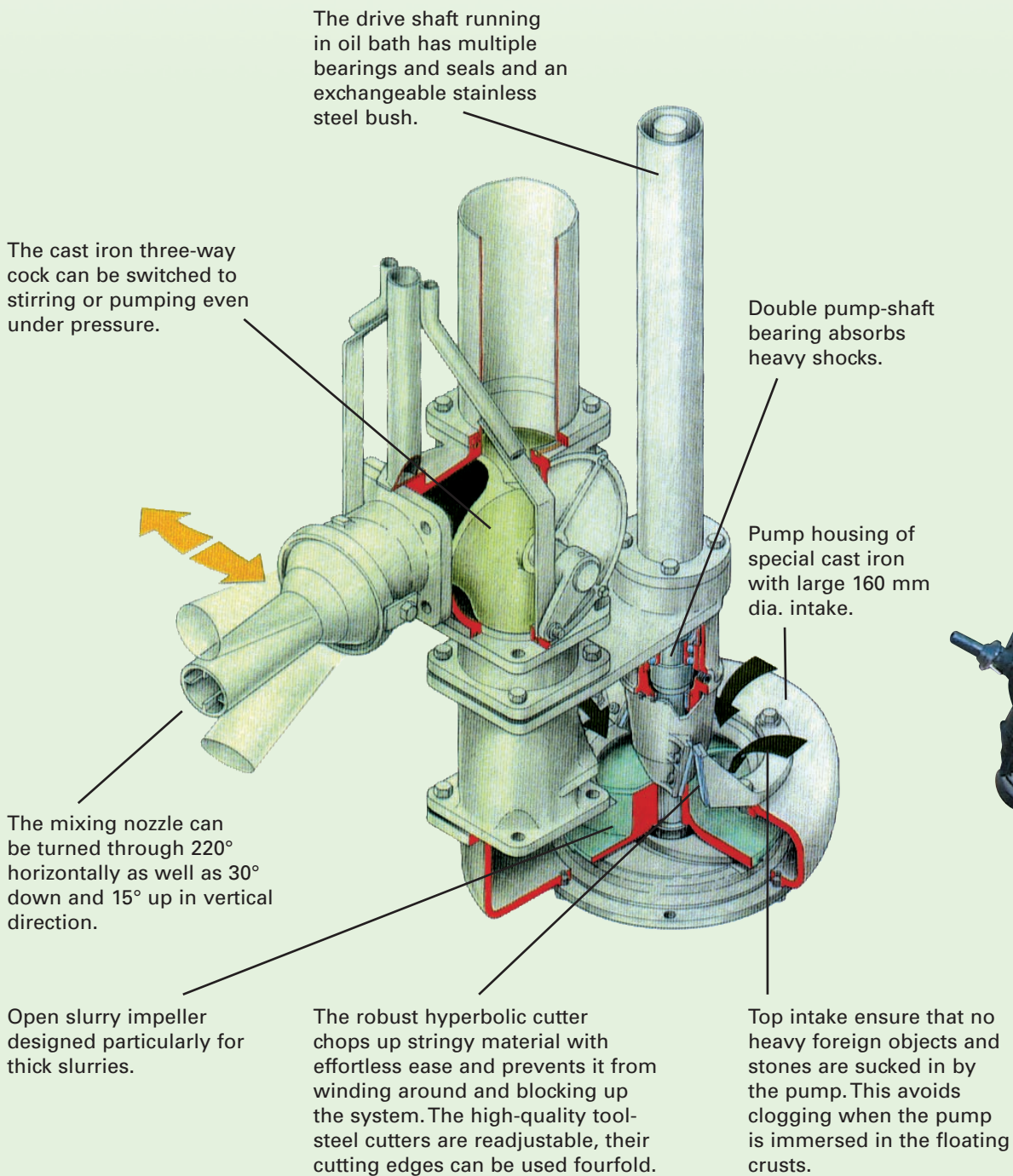
FOR A GREEN WORLD

MAGNUM LP/LE/S

Submersible pumps and long-shaft pumps

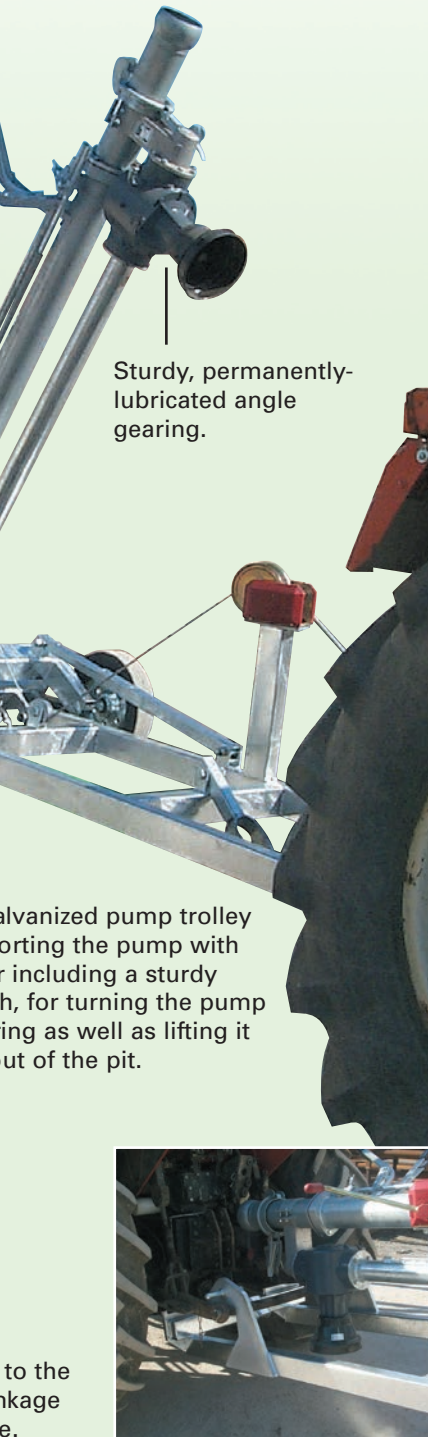
MAGNUM

Horizontal and vertical stirring nozzle adjustment ensures perfectly homogenised slurry



Easy to handle

Trolley hooked up to tractor's 3-point linkage with effortless ease.



Sturdy, permanently-lubricated angle gearing.

galvanized pump trolley supporting the pump with a handle, for turning the pump as well as lifting it out of the pit.

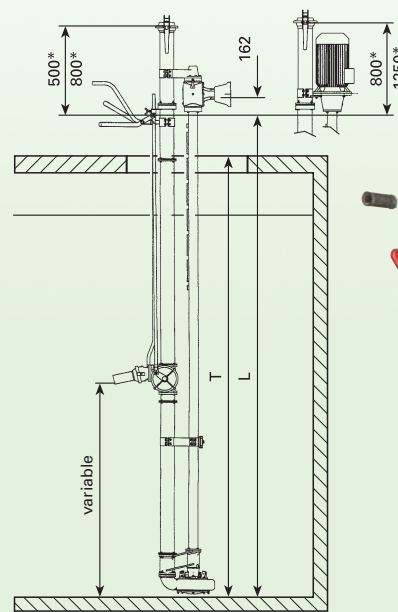
to the package e.

MAGNUM LP MAGNUM LE

Construction length 2 – 5 m, with graduations of 0.5 m. Minimum pit opening 60 x 80 cm.

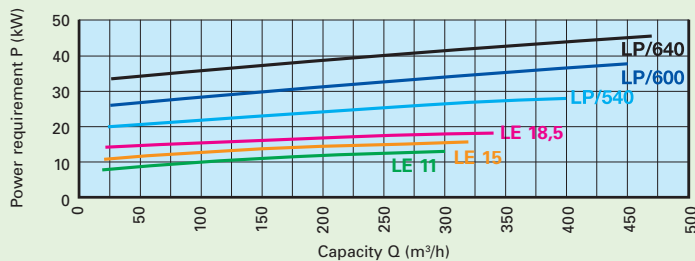
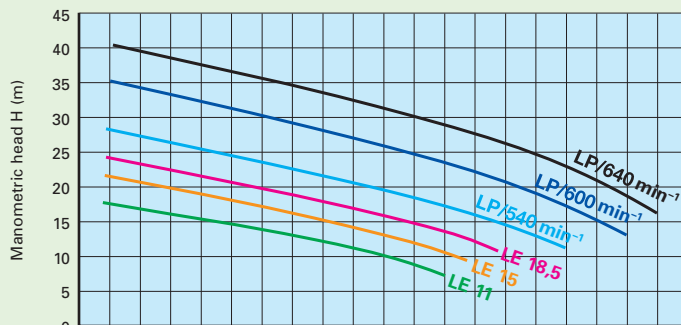
All LE and LP pumps are available without, with one or with two stirring nozzles.

*) Connector HK 133, optional length mm



Model	2,0	2,5	3,0	3,5	4,0	4,5	5,0
Pit depth T* m	2,30	2,80	3,30	3,80	4,30	4,80	5,30
Length L m	2,73	3,23	3,73	4,23	4,73	5,23	5,73

*) incl. pit cover



*) All values apply to water



MAGNUM	LP 55	LE 11	LE 15	LE 18.5
Driving power Tractor kW	40	–	–	–
Driving power Electric kW	–	11.0	15.0	18.5
Driving speed rpm	540	1500	1500	1500
Capacity m ³ /h	40 – 360	40 – 240	40 – 270	40 – 300
Head m	28.5 – 15	17 – 11	20 – 12	22 – 13



BAUER

FOR A GREEN WORLD



Hydraulic lifting frame

The hydraulic lifting frame with two hydraulic cylinders and control valves enables a more comfortable handling of the pump. It makes it much easier to tilt, lower and lift the pump into the pit.

Typical applications

- Pumping*
- Tanker filling
- Rinsing and cleaning
- Transfer between pits

*) Due to the higher driving power available, MAGNUM LP 55 is suited particularly for heavy-duty stirring performance and pumping of thick sludge with a higher solids content.



MAGNUM LP 55 in operation



Permanently installed LE model used for transfer



Stirring nozzle with large swivel range

Offers enormous stirring performance. Breaks up even extremely thick and viscous floating crusts in no time. The pump chops up all solids and stringy materials and mixes them to a homogenous pulp.



BAUER

FOR A GREEN WORLD

Original BAUER pump control with built-in thermistor tripping unit and overcurrent relay offers maximum motor protection

Strong rubber cable

12 x 2.5 cable screwing with strain relief device.

Oil reservoir

Protects the mechanical seal

Flanged disk and counter disk

Wear and corrosion resistant due to special surface treatment. Absorb shocks when large foreign objects are chopped up.

Impeller

Special cast with hardened cutting edges for maximum wear resistance. Screw-type impeller centre ensures excellent pumping capacity and provides ideal conditions for pumping thick sludge.

Intake bell

Durable high-grade casting with cutting edges and special coating for maximum wear resistance. Optimum cutting effect of cutting edges and impeller. Enormous pumping capacity due to large intake diameter.

Radial housing

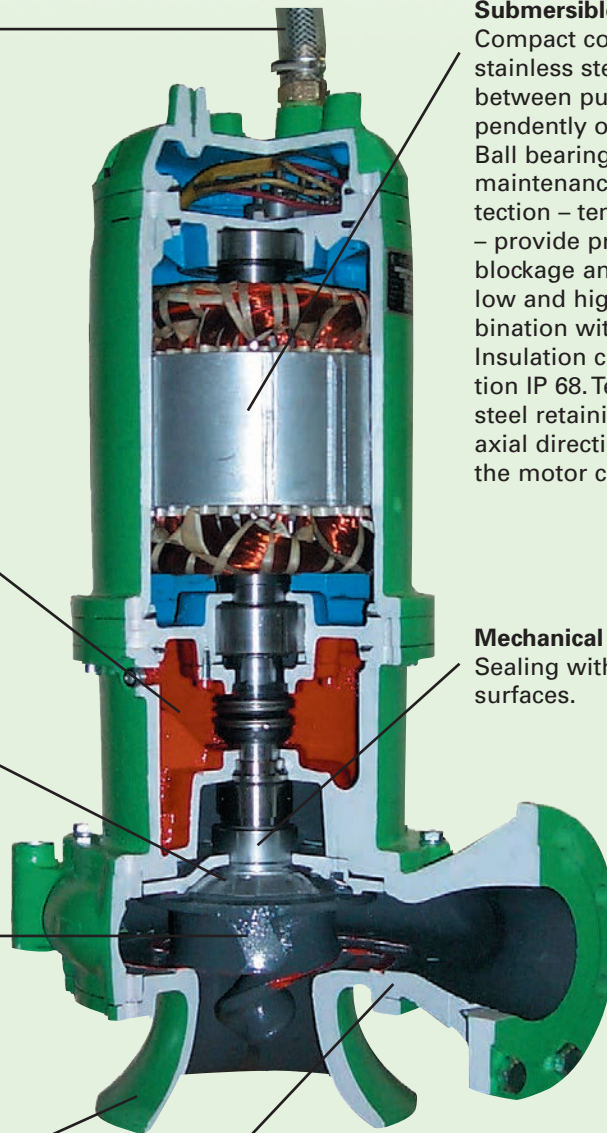
Large-size pumping channel ensures free passage of thick slurry without clogging.

Submersible three-phase motor

Compact construction. Short and stable stainless steel motor shaft. Shaft sealing between pump and motor by two independently operating mechanical seals. Ball bearings permanently lubricated and maintenance-free. Thermal winding protection – temperature-controlled resistors – provide protection in case of overload, blockage and phase failure as well as low and high voltage conditions (in combination with original BAUER control). Insulation class F (150 °C), type of protection IP 68. Terminal box with 3 stainless steel retaining rings M12 – cable entry in axial direction and strain relief device in the motor compartment.

Mechanical seal

Sealing with silicon-carbide sliding surfaces.



Typical applications

- Mixing (from 7.5 kW)
- Rinsing with mixing line
- Tanker filling
- Transfer between pits or into a silo



BAUER

FOR A GREEN WORLD



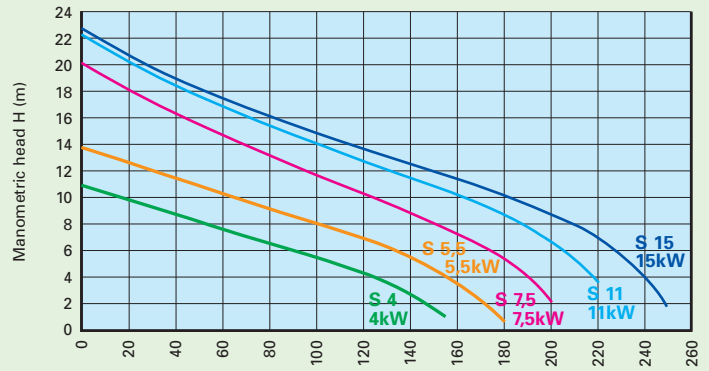
Pump trolley for 3 m immersion depth



Lifting pole with rope winch for open pits

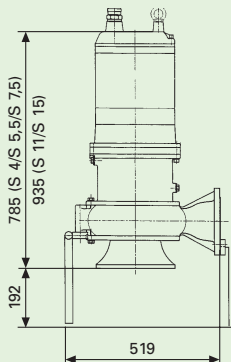


3-way cock with fixed stirring nozzle for 7.5 to 15 kW pump, including rods and delivery connection HK 133



*) All values apply to water

Capacity Q (m³/h)



MAGNUM	S 4	S 5.5	S 7.5	S 11	S 15
Driving power in kW	4	5.5	7.5	11	15
Driving speed in rpm	1440	1445	1450	1400	1450
Capacity m³/h	20 – 140	20 – 160	20 – 190	20 – 220	20 – 240
Head m	9.5 – 3	12.5 – 3.5	18 – 5	20 – 5	21 – 5

Your dealer:

Röhren- und Pumpenwerk BAUER GmbH
 8570 Voitsberg, Austria
 Phone +43 3142 200-0
 Fax +43 3142 200-320 / -340
 sales@bauer-at.com
 www.bauer-at.com

A BAUER Group company

